

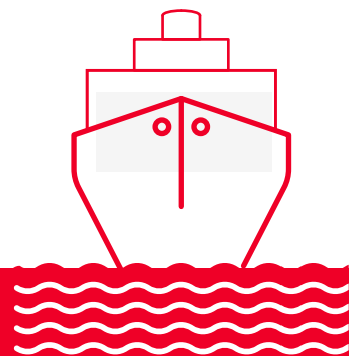
JEDDAH STATION

INFO

- **Cargo station operates since 1981.**
- **Handles more than 210 no. of flights per day.**

FACILITIES

- **Import: 15,200 m2**
- **Export: 4,650m2**
- **Transit: 2,475 m2**
- **Courier: Under development**
- **Pharma: 1,020 m2**
- **DGR: 1,013 m2 Perishables:**
- **1,458 m2 Car Parking: 140**
- **Custom Clearance: 10,500 m2**
- **ETV: 3,550 m2**



CONTACT

Jeddah Station Management Team:

cgodmjed@sal.sa

Telephone numbers:

Duty Manager +966 597767631



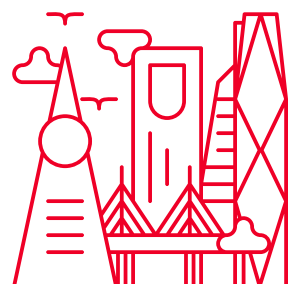
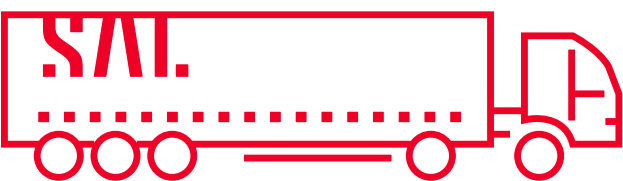
RIYADH STATION

INFO

- **Cargo stations operates since 1983.**
- **Handles more than 169 no. of flights per day.**

FACILITIES

- **Import: 20,000 m2**
- **Export: 6,600 m2**
- **Transit: 3,963 m2**
- **Courier: 6,600m2**
- **Pharma: 5,000m2**
- **DGR: 101 m2**
- **Perishables: 5,000 m2**
- **Car Parking: 161**
- **Custom Clearance: 11,700 m2**
- **ETV: 10,000 m2**



CONTACT

Riyadh Station Management Team:

ghruh@sal.sa

Telephone numbers:

Duty Manager: + 966 59 776 1281



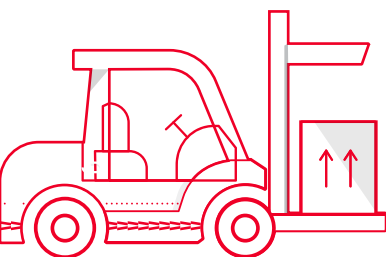
DAMMAM STATION

INFO

- **Cargo stations operates since 1998.**
- **Handles more than 78 no. of flights per day.**

FACILITIES

- **Import: 17,300 m2**
- **Export: 4,300 m2**
- **Transit: 1,800 m2**
- **Courier: 400 m2**
- **Pharma: 524 m2**
- **DGR: 1,100 m2**
- **Perishables: 95 m2**
- **Car Parking: 100**
- **Custom Clearance: 1,495 m2**
- **ETV: N/A**



CONTACT

Dammam Station Management Team:

dmmdutymanagers@sal.sa

Telephone numbers:

Duty Manager +966 597761406

Outbound +966 133339010

Inbound +966133339027



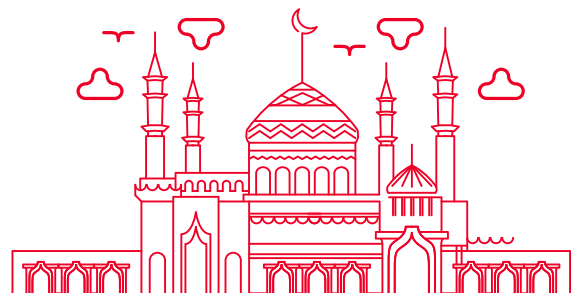
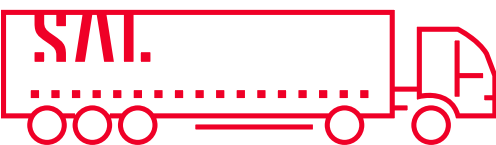
MADINAH STATION

INFO

- Cargo stations operates since 1971.
- Handles more than 60 no. of flights per day.

FACILITIES

- Import: 721 m2
- Export: 625 m2
- Transit: N/A
- Courier: N/A
- Pharma: 100 M2
- DGR: 48 m2
- Perishables: N/A
- Car Parking: 40
- Custom Clearance: 100 m2
- ETV: N/A



CONTACT

Madinah Station Management Team:

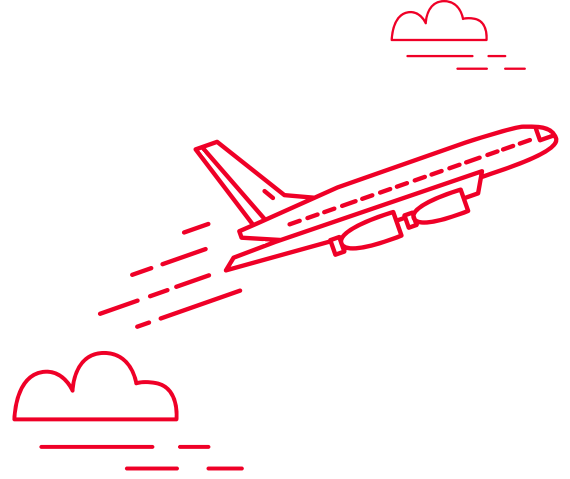
CgoOpsmed@sal.sa

Telephone numbers:

Supervisor on duty +96659778 5293



ABHA STATION

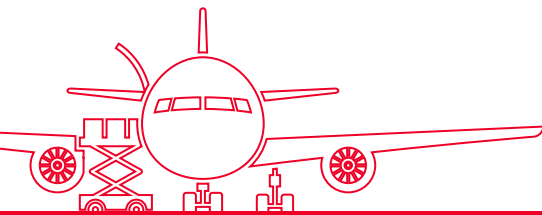


INFO

- Cargo station operates since 1977.
- Handles more than 30 no. of flights per day.

FACILITIES

- Import: 354 m2
- Export: 249 m2
- Transit: N/A
- Courier: N/A
- Pharma: 41 m2
- DGR: 24 m2
- Perishables: N/A
- Car Parking: N/A
- Custom Clearance: 60 m2
- ETV: N/A



CONTACT

Abha Station Team & Management:

AHBSTN@SAL.SA, DOMSTN@SAL.SA

Telephone numbers:

Station Landline+966 172276078

Station Manager +966 504878204



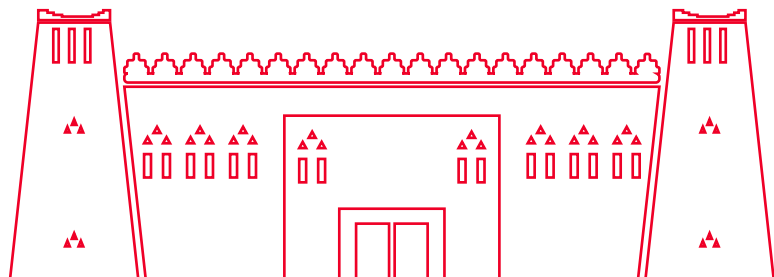
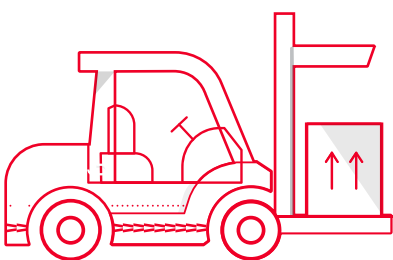
AI QASSIM STATION

INFO

- **Cargo station operates since 1964.**
- **Handles more than 30 no. of flights per day.**

FACILITIES

- **Import: 169 m2**
- **Export: 330 m2**
- **Transit: N/A**
- **Courier: N/A**
- **Pharma: 52 m2**
- **DGR: 28 m2**
- **Perishables: 28 m2**
- **Car Parking: N/A**
- **Custom Clearance: 120 m2**
- **ETV: N/A**



CONTACT

Elgassim Station Team & Management:

ELQSTN@SAL.SA, DOMSTN@SAL.SA

Telephone numbers:

Station Landline+966 163800008

Station Manager +966 504878204



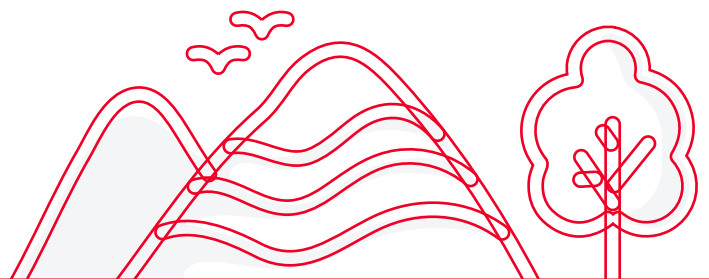
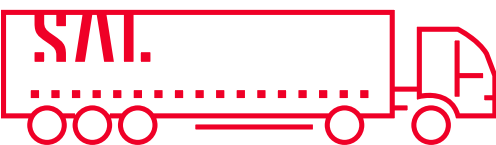
TAIF STATION

INFO

- Cargo station operates since 1976.
- Handles more than 24 no. of flights per day.

FACILITIES

- Import: 416 m2
- Export: 336 m2
- Transit: N/A
- Courier: N/A
- Pharma: 10 m2
- DGR: 28 m2
- Perishables: 28 m2
- Car Parking: N/A
- Custom Clearance: 144 m2
- ETV: N/A



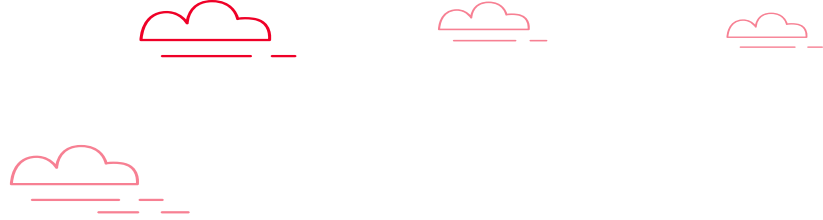
CONTACT

Taif Station Team & Management:

TIFSTN@SAL.SA, DOMSTN@SAL.SA

Telephone numbers:

Station Landline: coming soon
Station Manager +966 504878204



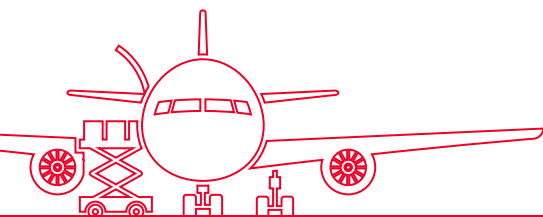
TABUK STATION

INFO

- Cargo station operates since 1985.
- Handles more than 30 no. of flights per day.

FACILITIES

- Import: 225 m2
- Export: 230m2
- Transit: N/A
- Courier: N/A
- Pharma: 29 m2
- DGR: N/A
- Perishables: N/A
- Car Parking: N/A
- Custom Clearance: 80 m2
- ETV: N/A



CONTACT

Tabuk Station Team & Management:

TUUSTN@SAL.SA, DOMSTN@SAL.SA

Telephone numbers:

Station Landline: coming soon
Station Manager +966 504878204



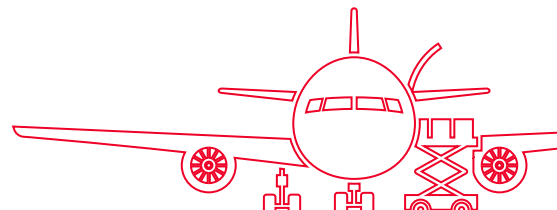
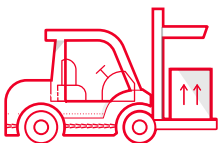
JAZAN STATION

INFO

- Cargo station operates since 1981.
- Handles more than 31 no. of flights weekly.

FACILITIES

- Import: 192 m2
- Export: 192 m2
- Transit: N/A
- Courier: N/A
- Pharma: N/A
- DGR: N/A
- Perishables: N/A
- Car Parking: N/A
- Custom Clearance: N/A
- ETV: N/A



CONTACT

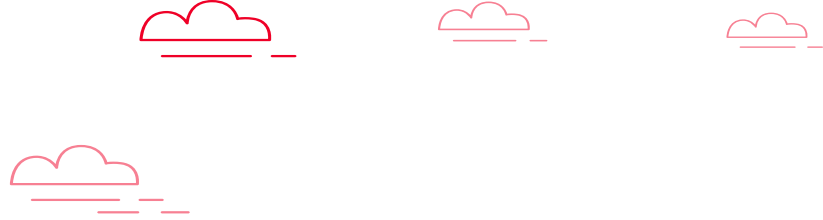
Gizan Station Team & Management:

GIZSTN@SAL.SA, DOMSTN@SAL.SA

Telephone numbers:

Station Landline+966 173221229

Station Manager +966 504878204



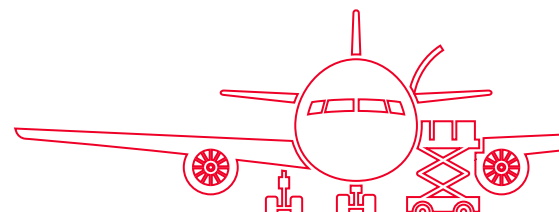
HAIL STATION

INFO

- **Cargo station operates since 1974.**
- **Handles more than 15 no. of flights per day.**

FACILITIES

- **Import: 156 m2**
- **Export: 169 m2**
- **Transit: N/A**
- **Courier: N/A**
- **Pharma: 10 m2**
- **DGR: N/A**
- **Perishables: N/A**
- **Car Parking: N/A**
- **Custom Clearance: N/A**
- **ETV: N/A**



CONTACT

Hail Station Team & Management:

HASTN@SAL.SA, DOMSTN@SAL.SA

Telephone numbers:

Station Landline+966 165325864

Station Manager +966 504878204



Other Domestic stations

(AlJouf, Gurayat, Arar, Al Qaisumah, Bisha, Sharurah, Najran)

INFO

- Handles more than 4 to 6 flights per day each station.
- Direct Sales and Delivery upon arrival.

FACILITIES

- One office in passenger terminal
- Import: N/A
- Export: N/A
- Transit: N/A
- Courier: N/A
- Pharma: N/A
- DGR: N/A
- Perishables: N/A
- Car Parking: N/A
- Custom Clearance: N/A
- ETV: N/A



CONTACT

Stations Team & Management:

AJFSTN@SAL.SA, URYSTN@SAL.SA, RAESTN@SAL.SA, AQISTN@SAL.SA,
BHHSTN@SAL.SA, SHWSTN@SAL.SA, EAMSTN@SAL.SA, DOMSTN@SAL.SA

Telephone numbers:

Station Manager +966 0504878204